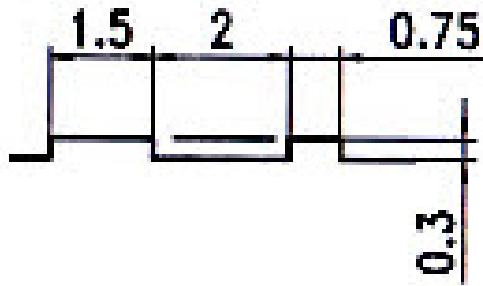
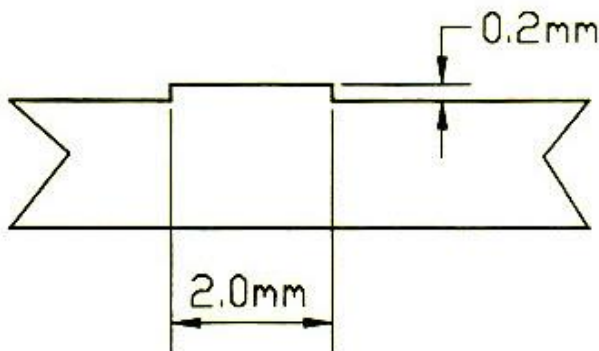


סימון על גבי פרופילי האלומיניום	שם היצרן	מס'
	KLIL MARKING	1
<p data-bbox="304 1234 478 1263">סימן זיהוי שקע</p> <p data-bbox="676 1227 871 1256">סימן זיהוי בליטה</p>	EXTAL	2
	PROFAL	3



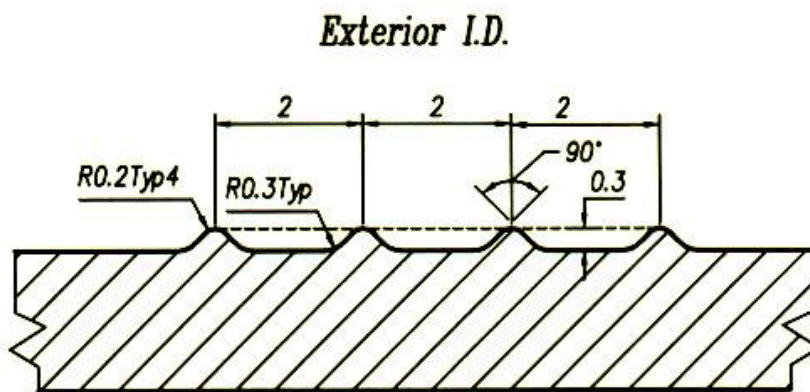
Guang Ya Aluminum

4



SCHREMER

5

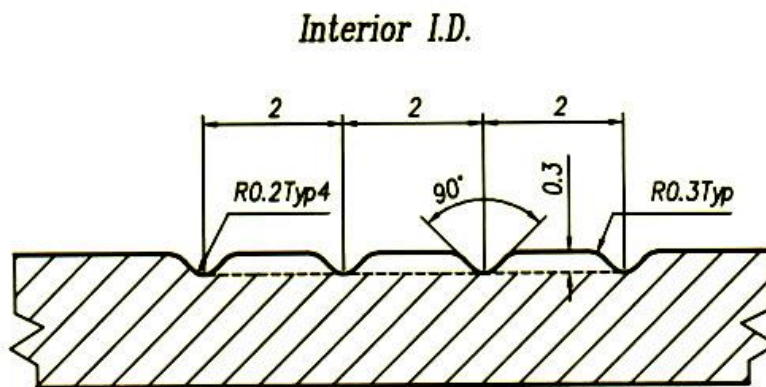


S.H.L ALUBIN

6

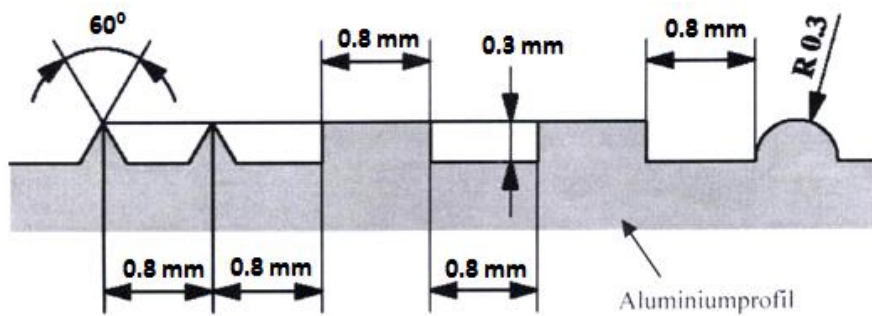
Exterior I.D. — I.D. (default)

Interior I.D. — In I.D.



<p>Apexes will be slightly curved due to the nature of wire erosion when die is cut</p>	<p>COSMOS PROFIL S.A (Scope)</p>	<p>7</p>
	<p>Foshan Nanhai Zhi Mei Aluminum</p>	<p>8</p>
	<p>TUNA Aluminum (OR ALUM)</p>	<p>9</p>
	<p>Guangdong Jianmei Aluminum Profile Factory (ALUM SHAABAN)</p>	<p>10</p>

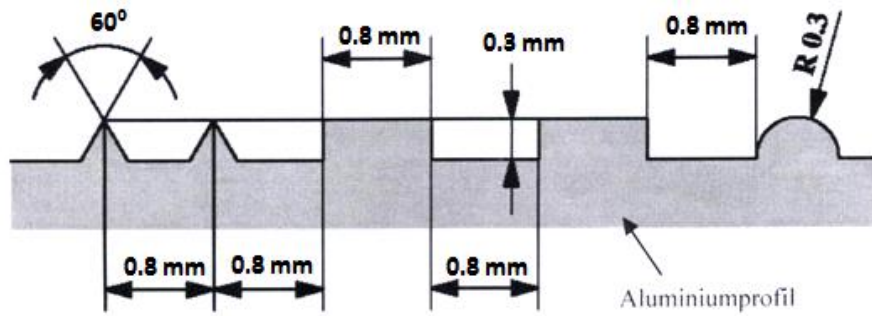
	<p>NALEXCO (BATICO)</p>	<p>11</p>
	<p>ARAL (AMIR BEST CARE)</p>	<p>12</p>
	<p>AL-BAYAN (ALUM HAMEULE)</p>	<p>13</p>
	<p>XUANCHENG (HUILV Aluminum)</p>	<p>14</p>



Nr.	Signierung	Lief.-Nr.		Lieferant
		Host	SAP.	
2.		651	651	Pandolfo Aluminium (Italien)
3.		237	237	SAPA-Köfem (Ungarn)
4.		1020	1020	Hydro Aluminium La Rocca (Spanien)
5.		--	--	Gordon (USA) Haomei (China) Gulf Extrusion (Dubai) COSMOS (Griechenland)
6.		8230 1040	52443 1040	ETEM S.A.(Griechenland) * ⁵ Aldural (Argentinien)
7.		501	501	APT Hiller
8.		954	954	SAPA. RC Profiles (Belgien)* ¹
9.		2425	2425	AWB * ⁴
10.		2212	2212	EMAX (Belgien) * ⁴
11.		--	--	Alu-Laufen (Schweiz) Alcoa Brasilien
12.		795	795	Thöni (Österreich)* ³
13.		584 --	584 --	Alcan (Landau) Keymark (USA)
14.		8308 --	53164 --	APT Kurvers Astroshape (USA)
15.		379	379	Fuchs
16.		584	584	Pechiney (Crailsheim)
17.		115	115	Hydro-Aluminium Uphusen / Rackwitz
18.		-- 584	-- 584	Alcan (Frankreich) Alcan Burg / Landau
19.		2371	2371	Extrusiones de Toledo * ⁴ (Spanien)
20.		119	119	Hydro-Aluminium Nenzing (Österreich)
21.		187	187	British Aluminium Extrusion (Großbritannien)
22.		139	139	Anodil S.A.* (Portugal)
23.		56564	56564	HAI (Österreich)

SCHUCO

המידות
עבור
סימונים
שמספרם
2-23

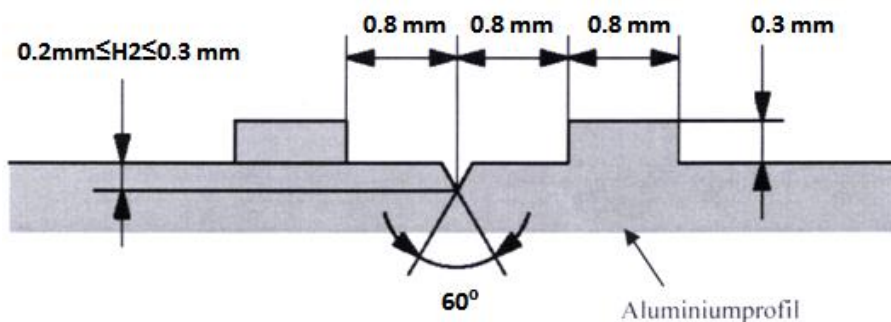


Nr.	Signierung	Lief.-Nr.		Lieferant
		Host	SAP.	
24.		612 8277	612 52809	Mäkelä Oy (Finnland)*2 Hydro Portalex
25.		633	633	Hydro-Aluminium Tønder (Dänemark)
39.		3052	3052	INDINVEST LT S.r.l. (Italien)
40.		1080 -- 8317	1080 -- 53359	Gartner Indalex, Miss (Kanada) PT Indal (Indonesien)
41.		478 -- --	478 -- --	SAPA Noblejas (Spanien) Schimmer Metal (Thailand) SAPA Indien
42.		1712 / 2418	1712 / 2418	Impol (Boho / Bi) Slowenien
43.				Erdoganlar (Türkei) *6
44.		1385	1385	Hydro-Aluminium Chrzanow (Polen)
45.		237 --	237 60665	SAPA-Köfem (Ungarn)) SAPA UK *7
46.		1221	1221	Hydro-Aluminium Extrusion Ltd.(GB)
47.		1470 8338	1470 53682	Neumann Aluminium (Österreich) LB Aluminium (Malaysia) *6
48.		166	166	ASAS Aluemyum (Türkei)
49.		1921 -- --	1921 -- --	Weser Alu Presswerk PJSC Samara (Rußland) CBA (Brasilien)
50.		1486 2265	1486 2265	Almaco (Griechenland) Metales del Talar (Argentinien)
51.		2965	2965	Metales Extruidos (Spanien)
52.		58415 --	58415 --	Bhoruka (Indien) VMK Invest (Kuluga, Rußland)

SCHUCO

המידות עבור
סימונים
שמספרם
24-25
39-52

16



SCHUCO

המידות עבור
סימונים
שמספרם
27-30

17

27.		116	116	Profilgruppen (Schweden)	
28.		2930	2930	Hydro Aluminium Acro (Brasilien)	
29.		554	554 (50127)	Estral (Italien)	
30.		525	525	HMT	
					<p>SCHUCO</p> <p>המידות עבור סימונים שמספרם 33-38</p> <p>Frankreich</p>
33.				Hydro Chateauroux	
34.				Hydro A.E Luce	
35.				Hydro A.E Pinon	
36.				Intexalu	
37.				Sapa	
38.				Softal	
					<p>SCHUCO</p> <p>המידות עבור סימונים שמספרם 53-60</p>
53.					
54.					
55.					
56.					
57.					
58.					
59.					
60.					

	<p>SCHUCO</p> <p>המידות עבור סימון שמספרו 61</p>	<p>20</p>
	<p>Guangdong JMA Aluminum</p> <p>(ALEF Aluminum Industries)</p>	<p>21</p>
	<p>NALCO</p> <p>(Alamal Aluminum Co)</p>	<p>22</p>
	<p>NAPCO</p>	<p>23</p>

	<p>Shandong Mengshan Aluminum</p>	<p>24</p>
	<p>Foshan Qianyang Aluminum Co. Ltd (Het Daniel)</p>	<p>25</p>
	<p>ALUPCO PRODUCTS</p>	<p>26</p>
	<p>FENGLU ALUMINIUM (Sineliium LTD)</p>	<p>27</p>

	<p>SANLEVO</p>	<p>28</p>
	<p>(Gta Motors)</p>	
	<p>INFINITY Aluminum Co Ltd.</p> <p>(King Aluminum Co)</p>	<p>29</p>
	<p>FOSHAN XUBAO IMPORT AND EXPORT Co. Ltd.</p> <p>(Golan zac)</p>	<p>30</p>

	<p>LINYI LIANJIA TRADE CO. LTD (All Trade LTD)</p>	<p>31</p>
	<p>Guangdong Golden Aluminum Co. (al bagino marketing LTD)</p>	<p>32</p>
	<p>Shandong Orient Aluminum (Alfa Thav Aluminum Industry Co)</p>	<p>33</p>
	<p>Volga Metallurgical Company (Israeli Metal Supply Company)</p>	<p>34</p>

	<p>Fujian Minfa Aluminium Inc (Kol-Chen)</p>	<p>35</p>
	<p>Europa Profil Aluminio (Cochav star quilty profile)</p>	<p>36</p>
	<p>Zahit Aluminyum (ALUM HAMEULE)</p>	<p>37</p>

	<p>sistem aluminium san. ve tic. a.ş</p> <p>(Nassar Modern Aluminum co.)</p>	<p>38</p>
	<p>Elite extrusion L.L.c</p> <p>(Care Go Pal Co.Ltd)</p>	<p>39</p>
	<p>Fabal Aluminyum</p> <p>(Eliran Solar)</p>	<p>40</p>
	<p>Foshan shi Nan hai cheng lv ye xian company</p> <p>(Hatrris Hamerahef)</p>	<p>41</p>

	<p>AAG Zhaoqing Asia Aluminium Factory company limited (SL metals)</p>	<p>42</p>
	<p>QALEX - Qatar Aluminium Extrusion Company (BATICO)</p>	<p>43</p>
	<p>Yongfeng Aluminum co. ltd (BATICO)</p>	<p>44</p>
	<p>Arabian extrusion factory (KATCO)</p>	<p>45</p>

	<p>SHANDONG JINXIANG ALUMINIUM CO.LTD (RADIUS)</p>	<p>46</p>
	<p>ECEMAKS (ALUMAL INDUSTRIES LTD)</p>	<p>47</p>
	<p>SISTEMNIY ALUMINIY (Gvol Houfek)</p>	<p>48</p>
	<p>GOLD SWORD ALUMINIUM (gazi chabach)</p>	<p>49</p>

	<p>Shandong Weisheng Aluminum co Ltd (אלומיניום אקסטרא.ס.ע.) (בע"מ)</p>	<p>50</p>
	<p>Foshan Jin Lan Aluminum Co. Ltd (אמיר בסט קייר בע"מ)</p>	<p>51</p>
	<p>National Aluminum and Profiles Co. (ABOD.Y. SAMRI)</p>	<p>52</p>

	<p>Furkan aluminum Ltd. Şti. (Gazi Zhbach)</p>	<p>53</p>
	<p>Alsharekah Watanyah Lsenat AL Aluminum W AL Profelat (ABOD.Y. SAMRI)</p>	<p>54</p>
	<p>PINGGUO JIANFENG ALUMINIUM CO. LTD (קורל פרופילי אלומיניום)</p>	<p>55</p>
	<p>AYT AYDINLATMA ELEKT. ELEKTR</p>	<p>56</p>

	<p>HUIXIN ALUMINUM (HSC (Israel) Ltd.)</p>	<p>57</p>
	<p>Guangdong Huachang Aluminum (HSC (Israel) Ltd.)</p>	<p>58</p>
	<p>EXALCO (Aluvantage Ltd.)</p>	<p>59</p>

	<p>Saray Aluminium (Rami Simonpur)</p>	<p>60</p>
	<p>GUANGDONG XINGQIU ALUMINUM LTD</p>	<p>61</p>
	<p>AKYUZLER ALUMINUM A.S (BATICO)</p>	<p>62</p>
	<p>ALUMINCO (ALUCENTER)</p>	<p>63</p>

	<p>OCMA</p>	<p>64</p>
	<p>Elli Aluminum System (best care)</p>	<p>65</p>
	<p>Guangdong Weiye Aluminium Factory Group Co., Ltd</p>	<p>66</p>

	<p>System Aluminum San. ve Tic. Inc. (Rav-Bariach)</p>	<p>67</p>
	<p>Wiefang Meizhitai Building Materials Co. Ltd. (Galran)</p>	<p>68</p>
	<p>Burak Alüminyum (Burak Alüminyum)</p>	<p>69</p>

	<p>Jiangsu huachang aluminum factory</p>	<p>71</p>
	<p>Aluminaks (W.G Alumina)</p>	<p>71</p>
	<p>Hueck (Ringel)</p>	<p>72</p>
	<p>Aslanlar Alüminyum</p>	<p>73</p>

	<p>Cintac Limited (N.M Aluminum Ltd)</p>	<p>74</p>
	<p>Siral</p>	<p>75</p>
	<p>ERSAŞ ALUMINUM (VIMETAL)</p>	<p>76</p>
	<p>Guangdong Wacang Aluminum Factory Co (VIMETAL)</p>	<p>77</p>

	<p>ALUMIL S.A (Alumil Israel)</p>	<p>78</p>
	<p>Benkam alu extrusions (CORONA GLASS)</p>	<p>78</p>

<p>INSIDE PROJECTION</p> <p>OUTSIDE PROJECTION</p>	<p>emirates extrusion factory (אמיר בסט קייר בע"מ)</p>	<p>79</p>
	<p>Weifang Jincheng Aluminium Co., Ltd (תהל אלומיניום בע"מ)</p>	<p>80</p>
	<p>Henan REGOO Industry Co., Ltd. (Golan zac)</p>	<p>81</p>

<p>Technical drawing of a profile cross-section. Dimensions include a top width of 1.1, a central width of 2.4, a total width of 8.2, and radii of R1.2. A central fillet has a radius of R0.2.</p>	<p>Tual Aluminyum (תדיראן-סולר)</p>	<p>82</p>
<p>Technical drawing of a profile cross-section. Dimensions include a top width of 2.4, a central width of 0.7, a total width of 8.1, and radii of R1.2. A central fillet has a radius of R0.2. A side width of 2.6 is also indicated.</p>		

<p>Technical drawing of an aluminum profile cross-section. The drawing shows a profile with a total width of 3.2±0.15. It features a central raised section with a width of 1.6±0.15 and a height of 0.4±0.15. The profile has a 90.0°±0.2° chamfered edge and a fillet radius of R0.6. The thickness of the profile is 0.3±0.15.</p>	<p>Altim Alümiyüm (בדר אלומיניום)</p>	<p>83</p>
<p>Technical drawing of a complex aluminum profile cross-section. The drawing shows a profile with multiple radii and dimensions. Key dimensions include: R3.3734, R2.6328, R2.6132, R3.5444, R3.5444, R3.5444, R2.8665, R3.3655, R3.2708, R2.8704, R3.6295, R3.4926, R3.5066, R3.0252, R2.8189, R6.9053, R6.9708, R7.0215, R7.0215, 0.17±0.5, 0.25±0.5, 1.0±0.15, 0.7±0.1, 0.50±0.1, 1.70±0.15, 0.7±0.1, 0.5±0.1, 1.70±0.15, 0.7±0.1, 0.5±0.1.</p>	<p>Shandong Tianqu Aluminum Co., Ltd (אלום שעבאן בע"מ)</p>	<p>84</p>
<p>Technical drawing of an aluminum profile cross-section. The drawing shows a profile with a total width of 2.00. It features a central raised section with a width of 1.00 and a height of 0.30. The profile has a fillet radius of R0.15. The thickness of the profile is 0.24.</p>	<p>Asr Al-Nahda Aluminum Co (אמיר בסט קר)</p>	<p>85</p>

	<p>INTER Cairo (W.g alumina)</p>	<p>86</p>
	<p>Qingyuan XinYueYa Aluminum Co. (אלום סיסטם)</p>	<p>87</p>
	<p>GUANDONG YONGLONG ALUMINUM CO (אמיר בסט קר)</p>	<p>88</p>
	<p>MUM GROUP CO., LTD.</p>	<p>89</p>