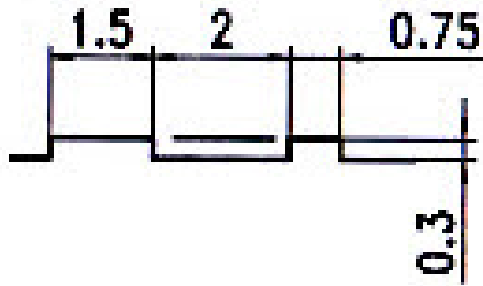
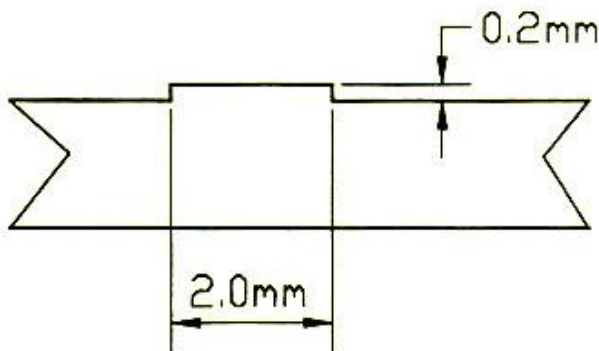


סימון על גבי פרופילי האלומיניום	שם היצרן	מס'
	KLIL MARKING	1
<p style="text-align: center;">סימון זיהוי שקע סימון זיהוי בליטה</p>	EXTAL	2
	PROFAL	3



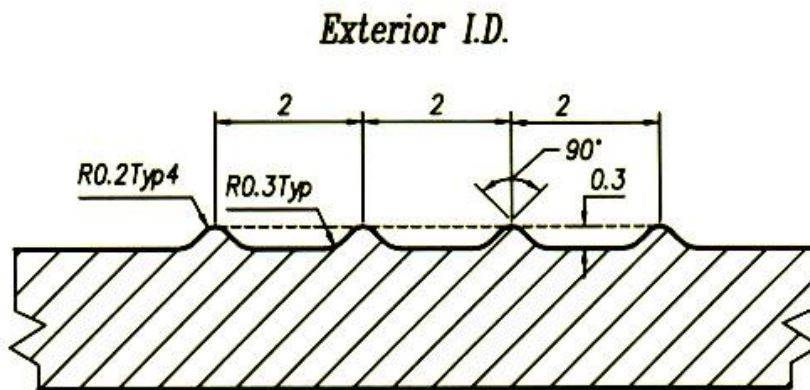
Guang Ya Aluminum

4



SCHREMER

5

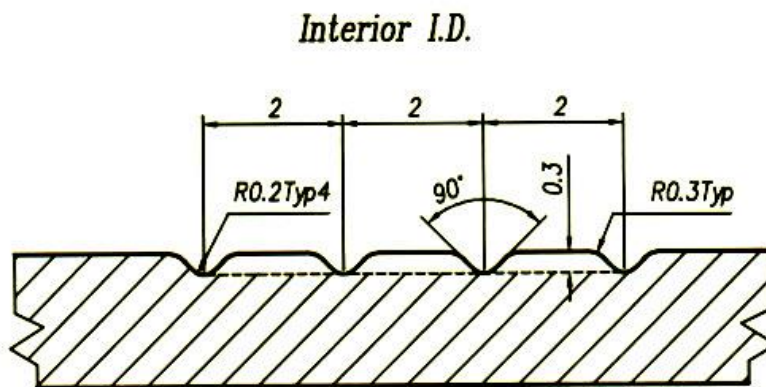


S.H.L ALUBIN

6

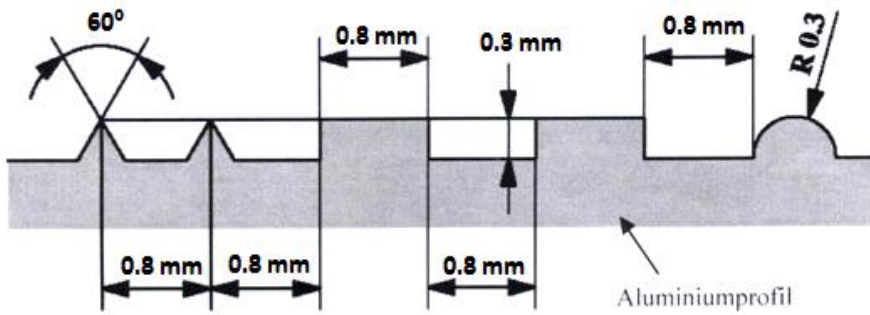
Exterior I.D. — I.D. (default)

Interior I.D. — In I.D.



<p>Apexes will be slightly curved due to the nature of wire erosion when die is cut</p>	<p>COSMOS PROFIL S.A (Scope)</p>	<p>7</p>
	<p>Foshan Nanhai Zhi Mei Aluminum</p>	<p>8</p>
	<p>TUNA Aluminum (OR ALUM)</p>	<p>9</p>
	<p>Guangdong Jianmei Aluminum Profile Factory (ALUM SHAABAN)</p>	<p>10</p>

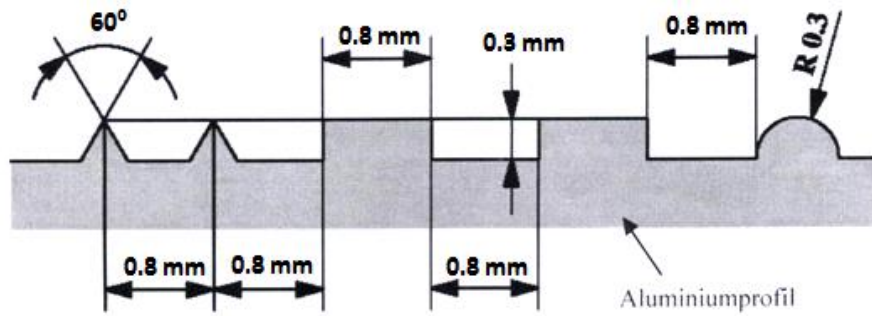
	<p>NALEXCO (BATICO)</p>	<p>11</p>
	<p>ARAL (AMIR BEST CARE)</p>	<p>12</p>
	<p>AL-BAYAN (ALUM HAMEULE)</p>	<p>13</p>
	<p>XUANCHENG (HUILV Aluminum)</p>	<p>14</p>



Nr.	Signierung	Lief.-Nr.		Lieferant
		Host	SAP.	
2.		651	651	Pandolfo Aluminium (Italien)
3.		237	237	SAPA-Köfem (Ungarn)
4.		1020	1020	Hydro Aluminium La Rocca (Spanien)
5.		--	--	Gordon (USA) Haomei (China) Gulf Extrusion (Dubai) COSMOS (Griechenland)
6.		8230 1040	52443 1040	ETEM S.A.(Griechenland) * ⁵ Aldural (Argentinien)
7.		501	501	APT Hiller
8.		954	954	SAPA. RC Profiles (Belgien)* ¹
9.		2425	2425	AWB * ⁴
10.		2212	2212	EMAX (Belgien) * ⁴
11.		--	--	Alu-Laufen (Schweiz) Alcoa Brasilien
12.		795	795	Thöni (Österreich)* ³
13.		584 --	584 --	Alcan (Landau) Keymark (USA)
14.		8308 --	53164 --	APT Kurvers Astroshape (USA)
15.		379	379	Fuchs
16.		584	584	Pechiney (Crailsheim)
17.		115	115	Hydro-Aluminium Uphusen / Rackwitz
18.		-- 584	-- 584	Alcan (Frankreich) Alcan Burg / Landau
19.		2371	2371	Extrusiones de Toledo * ⁴ (Spanien)
20.		119	119	Hydro-Aluminium Nenzing (Österreich)
21.		187	187	British Aluminium Extrusion (Großbritannien)
22.		139	139	Anodil S.A.* (Portugal)
23.		56564	56564	HAI (Österreich)

SCHUCO

המידות
עבור
סימונים
שמספרם
2-23

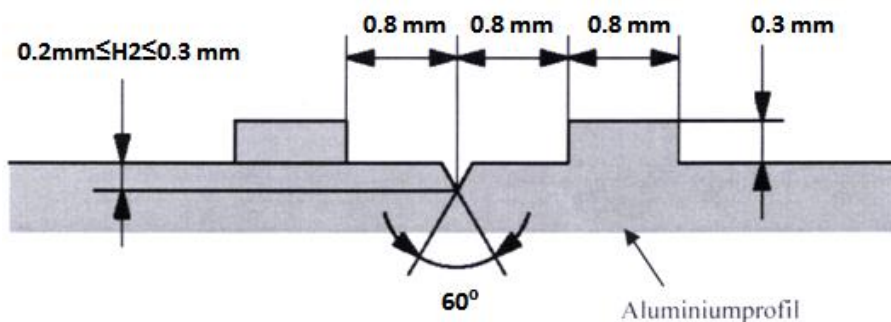


Nr.	Signierung	Lief.-Nr.		Lieferant
		Host	SAP.	
24.		612 8277	612 52809	Mäkelä Oy (Finnland)*2 Hydro Portalex
25.		633	633	Hydro-Aluminium Tønder (Dänemark)
39.		3052	3052	INDINVEST LT S.r.l. (Italien)
40.		1080 -- 8317	1080 -- 53359	Gartner Indalex, Miss (Kanada) PT Indal (Indonesien)
41.		478 -- --	478 -- --	SAPA Noblejas (Spanien) Schimmer Metal (Thailand) SAPA Indien
42.		1712 / 2418	1712 / 2418	Impol (Boho / Bi) Slowenien
43.				Erdoganlar (Türkei) *6
44.		1385	1385	Hydro-Aluminium Chrzanow (Polen)
45.		237 --	237 60665	SAPA-Köfem (Ungarn)) SAPA UK *7
46.		1221	1221	Hydro-Aluminium Extrusion Ltd.(GB)
47.		1470 8338	1470 53682	Neumann Aluminium (Österreich) LB Aluminium (Malaysia) *6
48.		166	166	ASAS Aluemyum (Türkei)
49.		1921 -- --	1921 -- --	Weser Alu Presswerk PJSC Samara (Rußland) CBA (Brasilien)
50.		1486 2265	1486 2265	Almaco (Griechenland) Metales del Talar (Argentinien)
51.		2965	2965	Metales Extruidos (Spanien)
52.		58415 --	58415 --	Bhoruka (Indien) VMK Invest (Kuluga, Rußland)

SCHUCO

המידות עבור
סימונים
שמספרם
24-25
39-52

16



SCHUCO

המידות עבור
סימונים
שמספרם
27-30

17

27.		116	116	Profilgruppen (Schweden)		
28.		2930	2930	Hydro Aluminium Acro (Brasilien)		
29.		554	554 (50127)	Estral (Italien)		
30.		525	525	HMT		
					<p>SCHUCO</p> <p>המידות עבור סימונים שמספרם 33-38</p> <p>Frankreich</p>	18
33.				Hydro Chateauroux		
34.				Hydro A.E Luce		
35.				Hydro A.E Pinon		
36.				Intexalu		
37.				Sapa		
38.				Softal		
					<p>SCHUCO</p> <p>המידות עבור סימונים שמספרם 53-60</p>	19
53.						
54.						
55.						
56.						
57.						
58.						
59.						
60.						

	<p>SCHUCO</p> <p>המידות עבור סימון שמספרו 61</p>	<p>20</p>
	<p>Guangdong JMA Aluminum</p> <p>(ALEF Aluminum Industries)</p>	<p>21</p>
	<p>NALCO</p> <p>(Alamal Aluminum Co)</p>	<p>22</p>
	<p>NAPCO</p>	<p>23</p>

	<p>Shandong Mengshan Aluminum</p>	<p>24</p>
	<p>Foshan Qianyang Aluminum Co. Ltd (Het Daniel)</p>	<p>25</p>
	<p>ALUPCO PRODUCTS</p>	<p>26</p>
	<p>FENGLU ALUMINIUM (Sineliium LTD)</p>	<p>27</p>

	<p>SANLEVO</p>	<p>28</p>
	<p>(Gta Motors)</p>	
	<p>INFINITY Aluminum Co Ltd.</p> <p>(King Aluminum Co)</p>	<p>29</p>
	<p>FOSHAN XUBAO IMPORT AND EXPORT Co. Ltd.</p> <p>(Golan zac)</p>	<p>30</p>

	<p>LINYI LIANJIA TRADE CO. LTD</p> <p>(All Trade LTD)</p>	<p>31</p>
	<p>Guangdong Golden Aluminum Co.</p> <p>(al bagino marketing LTD)</p>	<p>32</p>
	<p>Shandong Orient Aluminum</p> <p>(Alfa Thav Aluminum Industry Co)</p>	<p>33</p>
	<p>Volga Metallurgical Company</p> <p>(Israeli Metal Supply Company)</p>	<p>34</p>
	<p>Volga Metallurgical Company</p> <p>(Israeli Metal Supply Company)</p>	<p>34</p>

<p>Technical drawing of an aluminum profile cross-section. The drawing shows a profile with a top flange and a bottom flange. The top flange has a radius of $R0,2$ and a thickness of $0,3$. The bottom flange has a thickness of $0,4$. The distance between the inner surfaces of the flanges is 1, and the total width of the profile is $1,8$.</p>		
<p>Technical drawing of an aluminum profile cross-section. The drawing shows a profile with a top flange and a bottom flange. The top flange has a thickness of $0,3$ and a width of $0,6$. The bottom flange has a thickness of $0,6$ and a width of $0,6$. The distance between the inner surfaces of the flanges is 2. The profile has a 90° chamfered edge and a radius of $R0,1$.</p>	<p>Fujian Minfa Aluminium Inc (Kol-Chen)</p>	<p>35</p>
<p>Technical drawing of an aluminum profile cross-section. The drawing shows a profile with a top flange and a bottom flange. The top flange has a thickness of 0.3 and a 90° chamfered edge. The bottom flange has a thickness of 0.3 and a 90° chamfered edge. The inner diameter (I.D.) of the profile is 3.8.</p>	<p>Europa Profil Aluminio (Cochav star quilty profile)</p>	<p>36</p>
<p>Technical drawing of an aluminum profile cross-section. The drawing shows a profile with a top flange and a bottom flange. The top flange has a thickness of 0.3 and a width of 0.4. The bottom flange has a thickness of 0.3 and a width of 0.49. The distance between the inner surfaces of the flanges is 0.7. The profile has a 67° chamfered edge and a radius of 0.5.</p>	<p>Zahit Aluminyum (ALUM HAMEULE)</p>	<p>37</p>

	<p>sistem aluminium san. ve tic. a.ş</p> <p>(Nassar Modern Aluminum co.)</p>	<p>38</p>
	<p>Elite extrusion L.L.c</p> <p>(Care Go Pal Co.Ltd)</p>	<p>39</p>
	<p>Fabal Aluminyum</p> <p>(Eliran Solar)</p>	<p>40</p>
	<p>Foshan shi Nan hai cheng lv ye xian company</p> <p>(Hatrris Hamerahef)</p>	<p>41</p>

	<p>AAG Zhaoqing Asia Aluminium Factory company limited (SL metals)</p>	<p>42</p>
	<p>QALEX - Qatar Aluminium Extrusion Company (BATICO)</p>	<p>43</p>
	<p>Yongfeng Aluminum co. ltd (BATICO)</p>	<p>44</p>
	<p>Arabian extrusion factory (KATCO)</p>	<p>45</p>
	<p>Arabian extrusion factory (KATCO)</p>	<p>45</p>

	<p>SHANDONG JINXIANG ALUMINIUM CO.LTD (RADIUS)</p>	<p>46</p>
	<p>ECEMAKS (ALUMAL INDUSTRIES LTD)</p>	<p>47</p>
	<p>SISTEMNIY ALUMINIY (Gvol Houfek)</p>	<p>48</p>
	<p>GOLD SWORD ALUMINIUM (gazi chabach)</p>	<p>49</p>

	<p>Shandong Weisheng Aluminum co Ltd (אלומיניום אקסטרא.ס.ע.) (בע"מ)</p>	<p>50</p>
	<p>Foshan Jin Lan Aluminum Co. Ltd (אמיר בסט קייר בע"מ)</p>	<p>51</p>
	<p>National Aluminum and Profiles Co. (ABOD.Y. SAMRI)</p>	<p>52</p>

	<p>Furkan aluminum Ltd. Şti. (Gazi Zhbach)</p>	<p>53</p>
	<p>Alsharekah Watanyah Lsenat AL Aluminum W AL Profelat (ABOD.Y. SAMRI)</p>	<p>54</p>
	<p>PINGGUO JIANFENG ALUMINIUM CO. LTD (קורל פרופילי אלומיניום)</p>	<p>55</p>
	<p>AYT AYDINLATMA ELEKT. ELEKTR</p>	<p>56</p>

	<p>HUIXIN ALUMINUM (HSC (Israel) Ltd.)</p> <p>57</p>
	<p>Guangdong Huachang Aluminum (HSC (Israel) Ltd.)</p> <p>58</p>
	<p>EXALCO (Aluvantage Ltd.)</p> <p>59</p>

	<p>Saray Aluminium (Rami Simonpur)</p>	<p>60</p>
	<p>GUANGDONG XINGQIU ALUMINUM LTD</p>	<p>61</p>
	<p>AKYUZLER ALUMINUM A.S (BATICO)</p>	<p>62</p>
	<p>ALUMINCO (ALUCENTER)</p>	<p>63</p>

	<p>OCMA</p>	<p>64</p>
	<p>Elli Aluminum System (best care)</p>	<p>65</p>
	<p>Guangdong Weiye Aluminium Factory Group Co., Ltd</p>	<p>66</p>

	<p>System Aluminum San. ve Tic. Inc. (Rav-Bariach)</p>	<p>67</p>
	<p>Wiefang Meizhitai Building Materials Co. Ltd. (Galran)</p>	<p>68</p>
	<p>Burak Alüminyum (Burak Alüminyum)</p>	<p>69</p>

	<p>Jiangsu huachang aluminum factory</p>	<p>71</p>
	<p>Aluminaks (W.G Alumina)</p>	<p>71</p>
	<p>Hueck (Ringel)</p>	<p>72</p>
	<p>Aslanlar Alüminyum</p>	<p>73</p>

	<p>Cintac Limited (N.M Aluminum Ltd)</p>	<p>74</p>
	<p>Siral</p>	<p>75</p>
	<p>ERSAŞ ALUMINUM (VIMETAL)</p>	<p>76</p>
	<p>Guangdong Wacang Aluminum Factory Co (VIMETAL)</p>	<p>77</p>

	<p>ALUMIL S.A (Alumil Israel)</p>	<p>78</p>
	<p>Benkam alu extrusions (CORONA GLASS)</p>	<p>78</p>

<p>INSIDE PROJECTION</p> <p>OUTSIDE PROJECTION</p>	<p>emirates extrusion factory (אמיר בסט קייר בע"מ)</p>	<p>79</p>
	<p>Weifang Jincheng Aluminium Co., Ltd (תהל אלומיניום בע"מ)</p>	<p>80</p>
	<p>Henan REGOO Industry Co., Ltd. (Golan zac)</p>	<p>81</p>

<p>Technical drawing of a profile cross-section. Dimensions include a top width of 1.1, a total width of 8.2, and a depth of 2.4. It features radii of R1.2 on the top corners and R0.2 on the top edge. A central notch is shown with a depth of 2.4.</p>	<p>Tual Aluminyum (תדיראן-סולר)</p>	<p>82</p>
<p>Technical drawing of a profile cross-section. Dimensions include a total width of 8.1, a depth of 2.4, and a central notch width of 0.7. It features radii of R1.2 on the top corners. A secondary dimension of 2.6 is shown for the top edge.</p>		

<p>Technical drawing of an aluminum profile cross-section. The drawing shows a profile with a total width of 3,2±0,15. It features a central groove with a width of 1,6±0,15 and a depth of 0,4±0,15. The profile has a thickness of 0,3±0,15. The top surface is chamfered at a 90,0°±0,2° angle. The drawing includes a detail view 'I-I' showing a similar profile with a width of 3,2±0,15 and a thickness of 0,4±0,15. The profile is hatched to indicate its cross-section.</p>	<p>Altim Alümiyüm (בדר אלומיניום)</p>	<p>83</p>
<p>Technical drawing of a complex aluminum profile cross-section. The drawing shows a profile with multiple radii and dimensions. The radii are labeled as R3.3734, R2.6328, R2.6132, R3.5444, R3.5444, R3.5444, R2.8665, R3.3655, R3.2708, R2.8704, R3.6295, R3.4926, R3.5066, R3.0252, R2.8189, R6.9053, and R6.9708. The dimensions are labeled as 1.0±0.15, 0.17±0.5, 0.25±0.5, 0.7±0.1, 0.50±0.1, 1.70±0.15, 0.7±0.1, 0.5±0.1, 1.70±0.15, 0.7±0.1, and 0.5±0.1. The profile is hatched to indicate its cross-section.</p>	<p>Shandong Tianqu Aluminum Co., Ltd (אלום שעבאן בע"מ)</p>	<p>84</p>
<p>Technical drawing of an aluminum profile cross-section. The drawing shows a profile with a total width of 2.00. It features a central groove with a width of 1.00 and a depth of 0.30. The profile has a thickness of 0.24. The top surface is chamfered at a 90,0°±0,2° angle. The drawing includes a detail view 'I-I' showing a similar profile with a width of 2.00 and a thickness of 0.30. The profile is hatched to indicate its cross-section.</p>	<p>Asr Al-Nahda Aluminum Co (אמיר בסט קר)</p>	<p>85</p>

<p>0.67 0.53 0.3 R = 0.3 [mm] 90°</p>	<p>INTER Cairo (W.g alumina)</p>	<p>86</p>
<p>7.12 5.18 0.97 1.09 1.10 1.09 0.97 0.15 0.32 0.66 1.68 0.32 0.77 0.66 0.17 R0.40</p>	<p>Qingyuan XinYueYa Aluminum Co. (אלום סיסטם)</p>	<p>87</p>